

Octaves

Thomas Wharton

Note: Transpose to all major keys
(See the transposition guide for help)

Dakota Front Ensemble 2024

A Major **B** Relative Minor

Acoustic Keyboard

Piano

Synth 1

Synth 2

Synth Lead

Pad

Bass Guitar

Bass Guitar (for transposing)

Timpani

Timpani (for transposing)

Rack

Drumset

7 on a Hand

Alternating

1 1 1 1 1 1 1 1 4 4 4 4 4 4 6 6 6 6

1 1 1 1 1 1 1 1 4 4 4 4 4 4 6 6 6 6

R R R R R R R L L L L L L L R R R R R R R L L L L L L L R R R R R R R L R L R L R L R L R L R L R

The image displays a multi-stem musical score for a song. The score is organized into nine staves, each representing a different instrument or section. The time signature is 4/4, and the key signature is one flat (B-flat).

- Keys:** The top staff, featuring a complex melodic line with many sixteenth and thirty-second notes.
- Synth1:** The second staff, featuring a melodic line with many sixteenth and thirty-second notes.
- Synth2:** The third staff, featuring a melodic line with many sixteenth and thirty-second notes.
- B. Guit.:** The fourth staff, featuring a melodic line with many sixteenth and thirty-second notes.
- B. Guit (transposing):** The fifth staff, featuring a melodic line with many sixteenth and thirty-second notes.
- Timp.:** The sixth staff, featuring a melodic line with many sixteenth and thirty-second notes.
- Timp (transposing):** The seventh staff, featuring a melodic line with many sixteenth and thirty-second notes.
- Rack:** The eighth staff, featuring a complex rhythmic pattern with many sixteenth and thirty-second notes.
- Dr.Set:** The bottom staff, featuring a complex rhythmic pattern with many sixteenth and thirty-second notes.

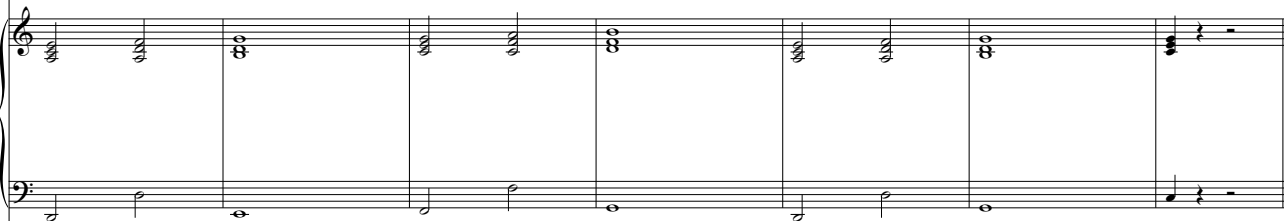
The score includes various musical notations, such as notes, rests, and dynamic markings. The overall style is a mix of electronic and acoustic elements, with a focus on complex rhythmic patterns.

17

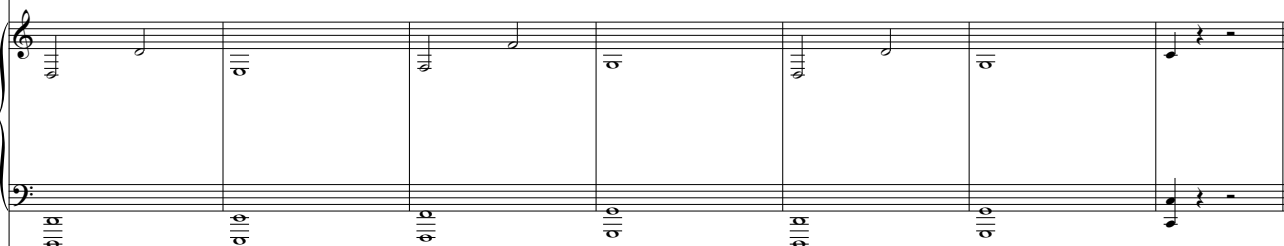
Keys



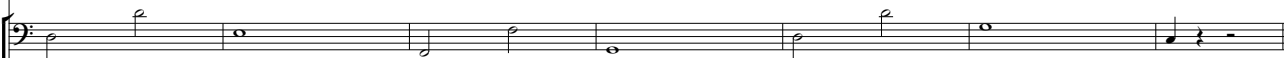
Synth1



Synth2



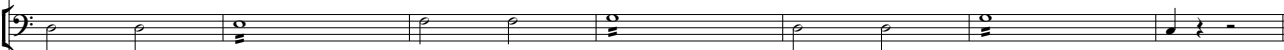
B. Guit.



B. Guit (transposing)



Timp.



Timp (transposing)



Rack



Dr.Set

